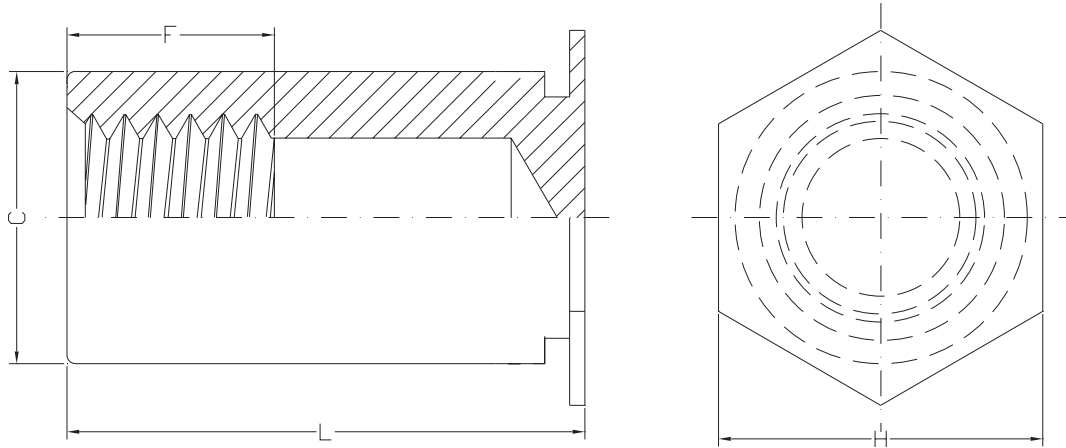


SELF-CLINCHING STANDOFFS



TYPES ASO,ASON, ASOA, ASOS THRU-HOLE UNTHREADED STANDOFFS - UNIFIED & METRIC



GENERAL DIMENSIONAL DATA

UNIFIED (inch)	Thru-hole Code	Min. Sheet Thickness	Hole Size In Sheet +.003 -.000	C +.000 -.005	H Nom.	Min. Dist. Hole C/L To Edge
	4116	.040	.166	.165	.187	.23
	6116	.040	.213	.212	.250	.27
	6143	.040	.213	.212	.250	.27
	8143	.050	.281	.280	.312	.31
	8169	.050	.281	.280	.312	.31
	8194	.050	.281	.280	.312	.31

METRIC (mm)	Thru-hole Code	Min. Sheet Thickness	Hole Size In Sheet +0.08	C -0.13	H Nom.	Min. Dist. Hole C/L To Edge
	43.1	1.02	4.22	4.2	4.8	6
	63.1	1.02	5.41	5.39	6.4	6.8
	63.6	1.02	5.41	5.39	6.4	6.8
	83.6	1.27	7.14	7.12	7.9	8
	84.1	1.27	7.14	7.12	7.9	8
	85.1	1.27	7.14	7.12	7.9	8

THRU-HOLE DIAMETER AND LENGTH SELECTION DATA

UNIFIED (inch)	B Thru-hole Diameter +.004 -.003	Type				Thru-hole Code	Length "L" +.002 -.005 (Length Code in 32nds of an inch)										
		Steel	Steel Non Heat-treated	Stainless Steel	Aluminum		.125	.187	.250	.312	.375	.437	.500	.562	.625	.687	.750
	.116	ASO	ASON	ASOS	ASOA	4116 6116 ⁽¹⁾	4	6	8	10	12	14	16	18	20	22	24
.143	ASO	ASON	ASOS	ASOA	6143 8143 ⁽¹⁾	4	6	8	10	12	14	16	18	20	22	24	
.169	ASO	ASON	ASOS	ASOA	8169	4	6	8	10	12	14	16	18	20	22	24	
.194					8194												

METRIC (mm)	B Thru-hole Diameter +0.1 -0.08	Type				Thru-hole Code	Length "L" +0.05 -0.13 (Length Code in millimeters)										
		Steel	Steel Non Heat-treated	Stainless Steel	Aluminum		3	4	6	8	10	12	14	16	18	20	
	3.1	ASO	ASON	ASOS	ASOA	43.1 63.1 ⁽¹⁾	3	4	6	8	10	12	14	16	18	20	
3.6	ASO	ASON	ASOS	ASOA	63.6 83.6 ⁽¹⁾	3	4	6	8	10	12	14	16	18	20		
4.1	ASO	ASON	ASOS	ASOA	84.1	3	4	6	8	10	12	14	16	18	20		
5.1					85.1												

(1) Standoffs with thru-hole codes 6116, 8143, 63.1 and 83.6 offer greater wall thickness for that thru-hole diameter