

PANEL SELF-CLINCHING STANDOFFS



TYPES ASKC

Part Number Designation



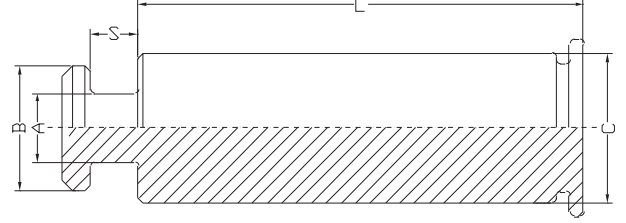
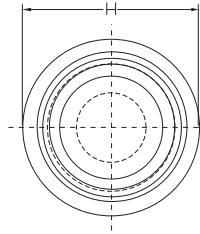
Type and Material



Body Size and Sheet Thickness Code



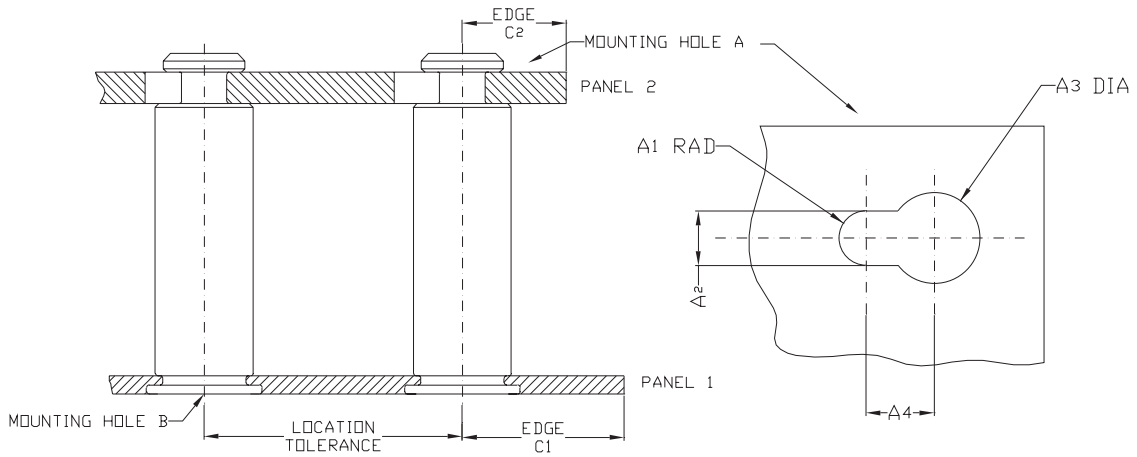
Length Code



Fastener Material: 300 Series Steel
Finish: Passivated and/or tested per ASTM A380

UNIFIED (inch)	Type	Body Size - Sheet Code	Length "L" ± .005 (Length Code in 32nds of an inch)										A	B	C	S	M	H	D
	Stainless Steel		.188	.250	.312	.375	.437	.500	.562	.625	.750	.875	1.00	± .003	± .003	Max.	± .003	Max.	Nom
ASKC	6060	6	8	10	12	14	16	18	20	24	28	32	.099	.177	.212	.068	.108	.250	.216

METRIC (mm)	Type	Body Size - Sheet Code	Length "L" ± 0.13 (Length Code in millimeters)										A	B	C	S	M	H	D
	Stainless Steel		6	8	10	12	14	16	18	20	22	25	± 0.08	± 0.08	Max.	± 0.08	Max.	Nom	Anvil Hole + 0.08
ASKC	61.5	6	8	10	12	14	16	18	20	22	25	2.5	4.5	5.38	1.72	2.75	6.35	5.5	



UNIFIED (inch)	Type	PANEL 1				PANEL 2				Material	Thickness Range	Edge Distance C ₂ Min.	
		Bottom Mounting Hole B + .003 - .000	Hardness Max.	Thickness Min.	Edge Distance C ₁ Min.	Location Tolerance Max.	Top Mounting Hole A						
						A ₁ Nom.	A ₂ ± .003	A ₃ ± .003	A ₄ Min.				
ASKC		.213	HRB 70	.040	.260	± .005	.059	.118	.197	.148	PC Board or Metal	.057-.064	.160

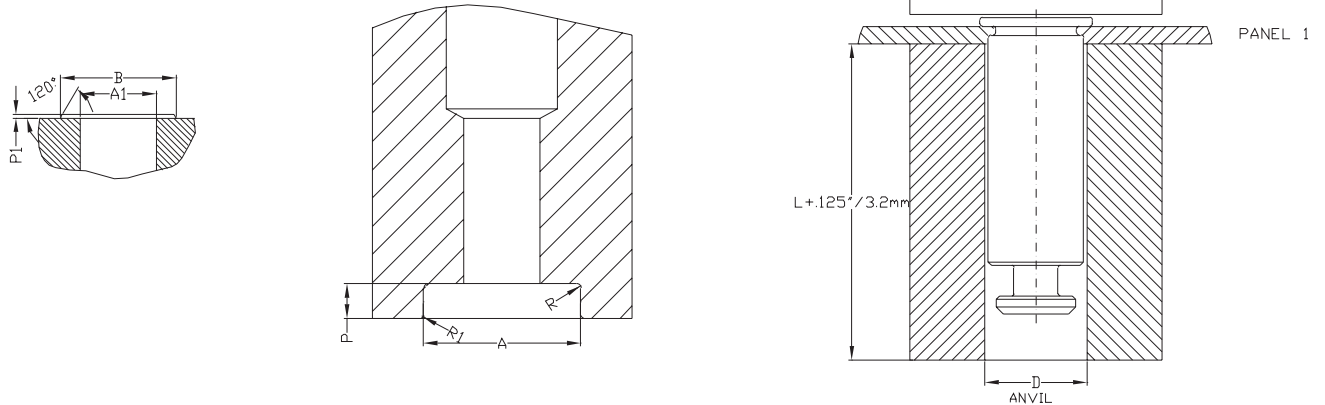
METRIC (mm)	Type	PANEL 1				PANEL 2				Material	Thickness Range	Edge Distance C ₂ Min.	
		Bottom Mounting Hole B + 0.08	Hardness Max.	Thickness Min.	Edge Distance C ₁ Min.	Location Tolerance Max.	Top Mounting Hole A						
						A ₁ Nom.	A ₂ ± 0.08	A ₃ ± 0.08	A ₄ Min.				
ASKC		5.4	HRB 70	1	6.6	± 0.13	1.5	3	5	3.75	PC Board or Metal	1.45-1.62	4.1

PANEL SELF-CLINCHING STANDOFFS



INSTALLATION

1. Punch or drill properly sized mounting hole in Panel 1.
2. Place the barrel of the fastener through mounting hole and into anvil as shown in drawing to the right.
3. With the punch and anvil surfaces parallel, apply only enough squeezing force to embed the head flush with the panel.



PERFORMANCE DATA ⁽¹⁾

Installation and Pushout

		.060" 5052-H34 Aluminum		.060" Cold-Rolled Steel	
UNIFIED (inch)	Body Size - Sheet Code	Installation (lbs.)	Pushout (lbs.)	Installation (lbs.)	Pushout (lbs.)
	6060	1600	250	3200	600
		1.52 mm 5052-H34 Aluminum		1.52 mm Cold-Rolled Steel	
METRIC (mm)	Body Size - Sheet Code	Installation (kN)	Pushout (N)	Installation (kN)	Pushout (N)
	61.5	7.1	1100	14.2	2600

Permissible Side-Loading

		.060" 5052-H34 Aluminum									.060" Cold-Rolled Steel										
		Length Codes									Length Codes										
UNIFIED (inch)	Body Size - Sheet Code	-6	-8	-10	-12	-14	-16	-20	-24	-32	-6	-8	-10	-12	-14	-16	-20	-24	-32		
	6060	Side-Load Force Max. (lbs.)									Side-Load Force Max. (lbs.)										
		82	63	52	44	38	34	27	22	17	197	153	126	106	92	81	66	55	42		
		1.52 mm 5052-H34 Aluminum									1.52 mm Cold-Rolled Steel										
		Length Codes									Length Codes										
METRIC (mm)	Body Size - Sheet Code	-6	-8	-10	-12	-14	-16	-18	-20	-22	-25	-6	-8	-10	-12	-14	-16	-18	-20	-22	-25
	61.5	Side-Load Force Max. (N)									Side-Load Force Max. (N)										
		296	228	184	156	136	116	104	96	88	76	696	540	440	372	320	280	252	228	208	184

⁽¹⁾ The installation and pushout values reported are averages when all installation specifications and procedures are followed. Variations in mounting hole size, panel material and installation procedure will affect this data. Performance testing of this product in your application is recommended. We will be happy to provide samples for this purpose.